

Workforce Focus

From the Hamilton Training Advisory Board

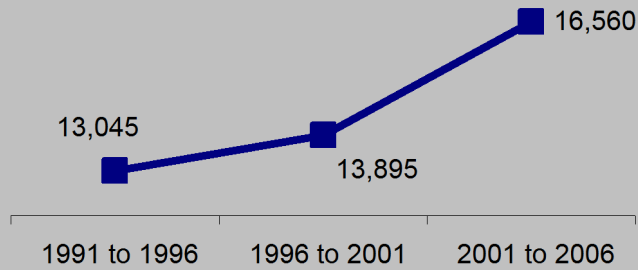
In this Issue:
Census Release

- Immigration
- Language
- Mobility

Immigration

Immigration Levels

Recent immigrants by arrival period, Hamilton



Growth in Newcomers

The number of immigrants coming to Hamilton increased only slightly in the nineties, but jumped significantly between 2001 and 2006.

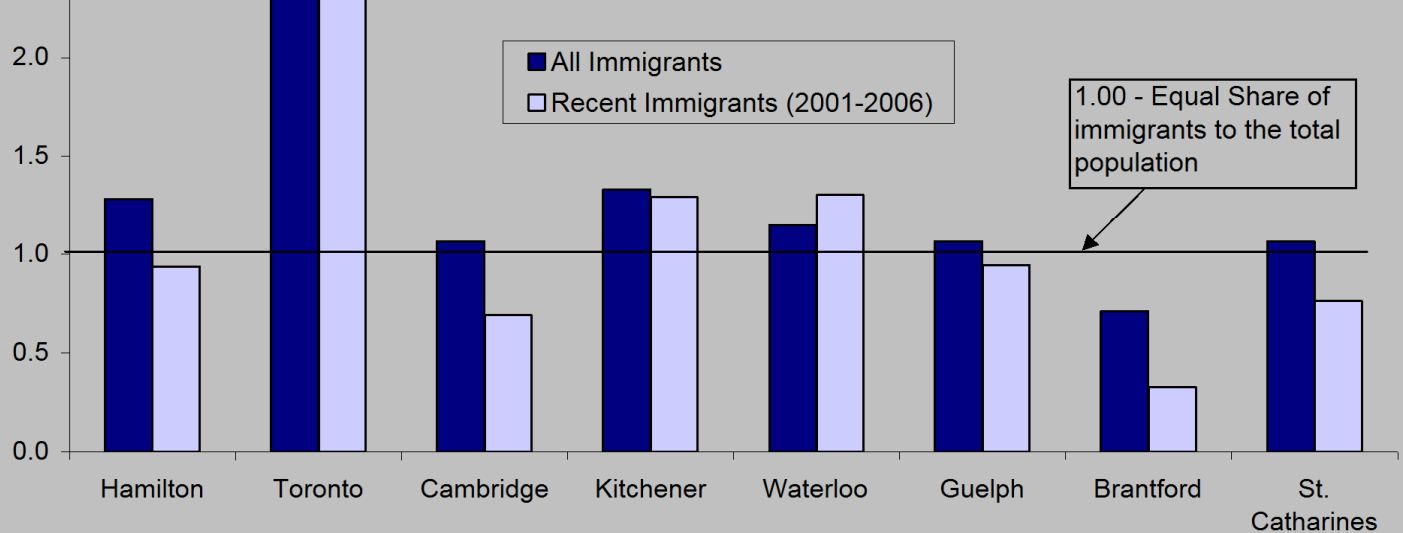
Points of Departure

Top 10 birthplaces of recent immigrants (2001-2006)

Hamilton	Ontario
People's Republic of China	India
India	People's Republic of China
Pakistan	Pakistan
United States of America	Philippines
Philippines	Sri Lanka
Colombia	United States of America
United Kingdom	Iran
Iraq	South Korea
Romania	Russian Federation
South Korea	Colombia

Share of Immigrants

Relative ratios of immigrants to the total population, Hamilton and neighboring cities



Keeping Pace

The relative ratio is calculated by dividing a regions share of Canada's immigrant population by the regions share of Canada's total population. The same share of each would be a 1.00 ratio. Hamilton has a relatively high share of immigrants for its population size, and receives almost an equal proportion of recent immigrants. Though well behind Toronto as an immigrant draw, Hamilton keeps pace with most other cities in South Western Ontario.



For more information please contact The Hamilton Training Advisory Board at:
Hamilton City Centre 77 James St. North, Unit 117, Hamilton ON. L8R 2K3 (905) 521-5777 info@htab.ca

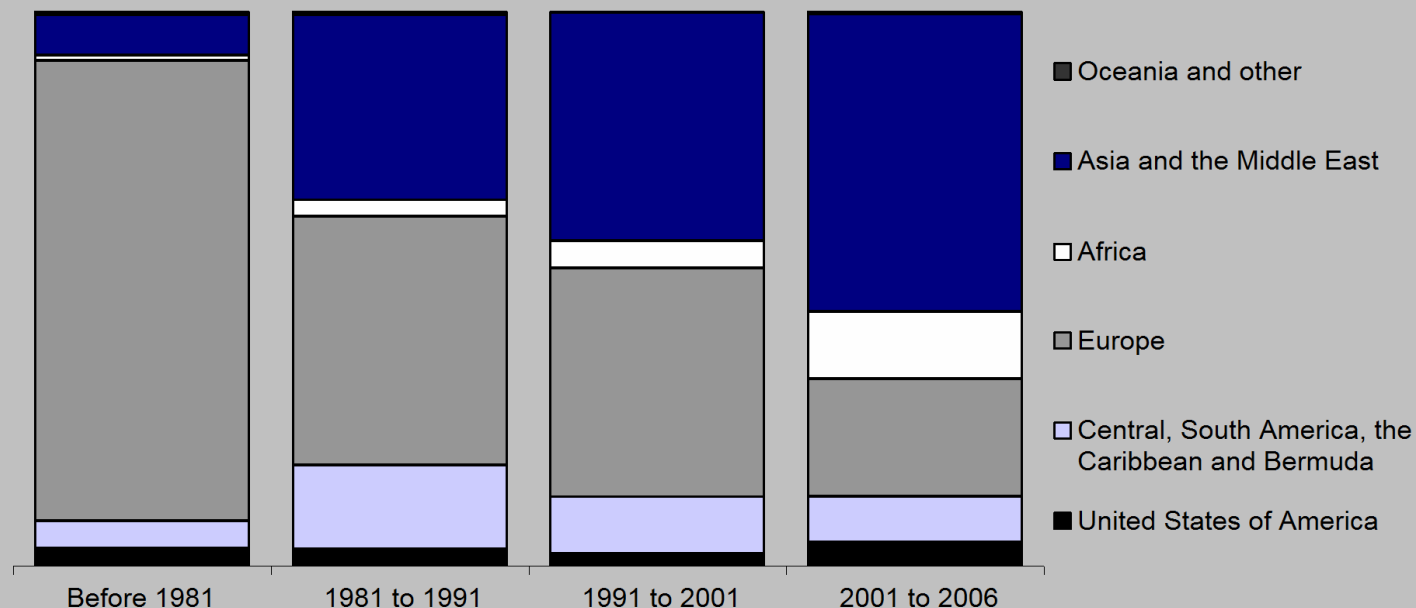
Workforce Focus is an original publication of the Elgin, Middlesex, Oxford Local Training Board

Created by : Dane Rice

Immigration

Region of Origin Change

Share of immigrant origins by period of arrival, Hamilton

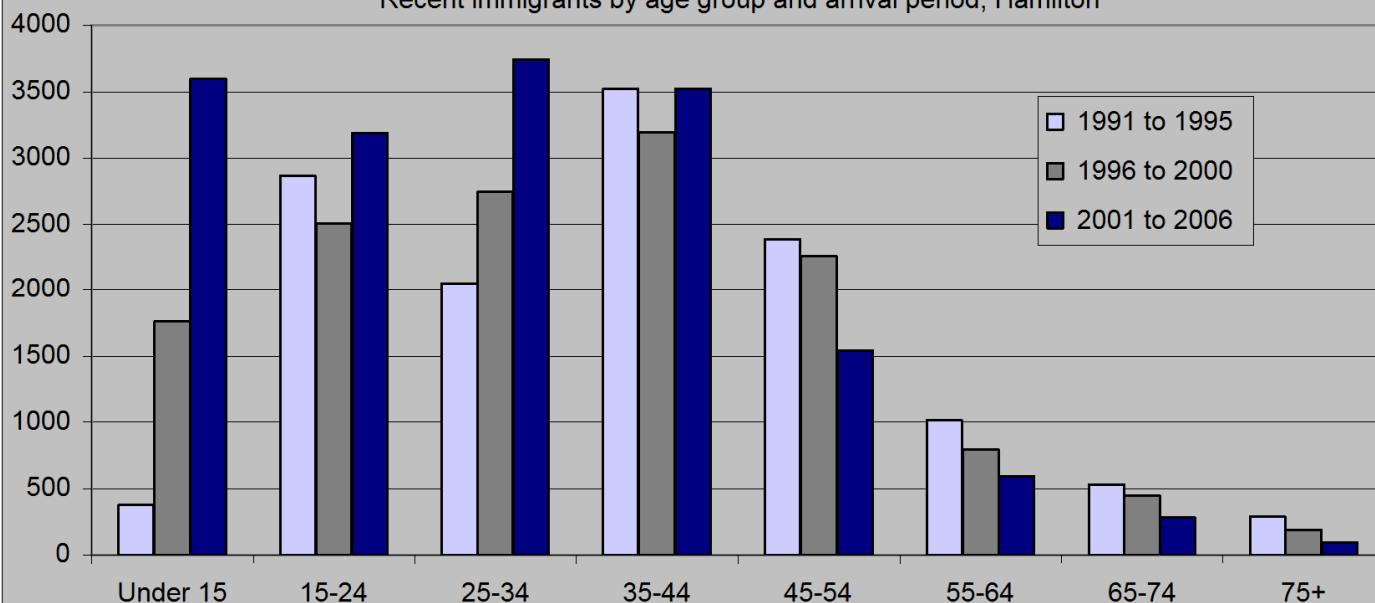


Asia and Middle East Dominate Immigrant Origins

Like Ontario as a whole, Hamilton receives a majority of its new immigrants from Asia and the Middle East with 54% of all newcomers between 2001 and 2006. This area of the world sent 8,800 immigrants to Hamilton during that five years. The fastest growing immigrant population is from Africa.

Immigrant Age Changes

Recent immigrants by age group and arrival period, Hamilton



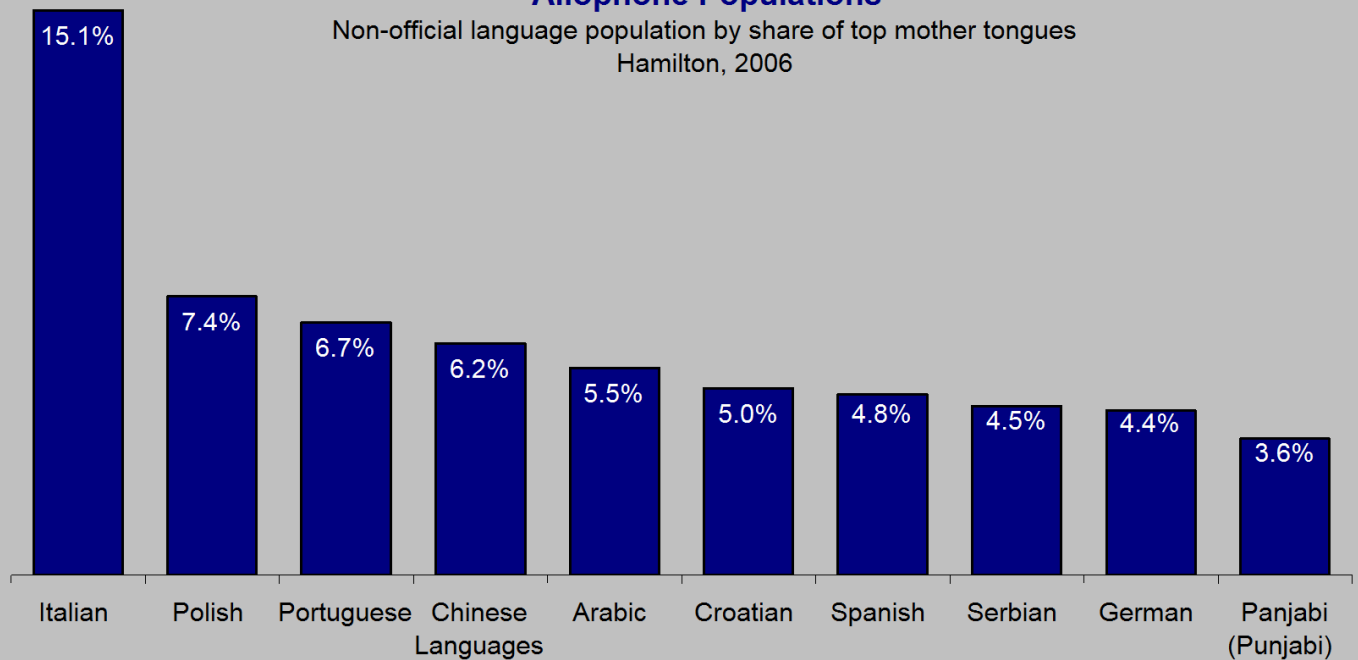
Younger Newcomers

There has been a large increase in the number of recent immigrants to Hamilton under 15 years old and between the ages of 25-34. Ontario's demographic profile for new immigrants shares a similar pattern with one significant distinction: a much larger share of recent immigrants to Hamilton are under age 15.

Language

Allophone Populations

Non-official language population by share of top mother tongues
Hamilton, 2006

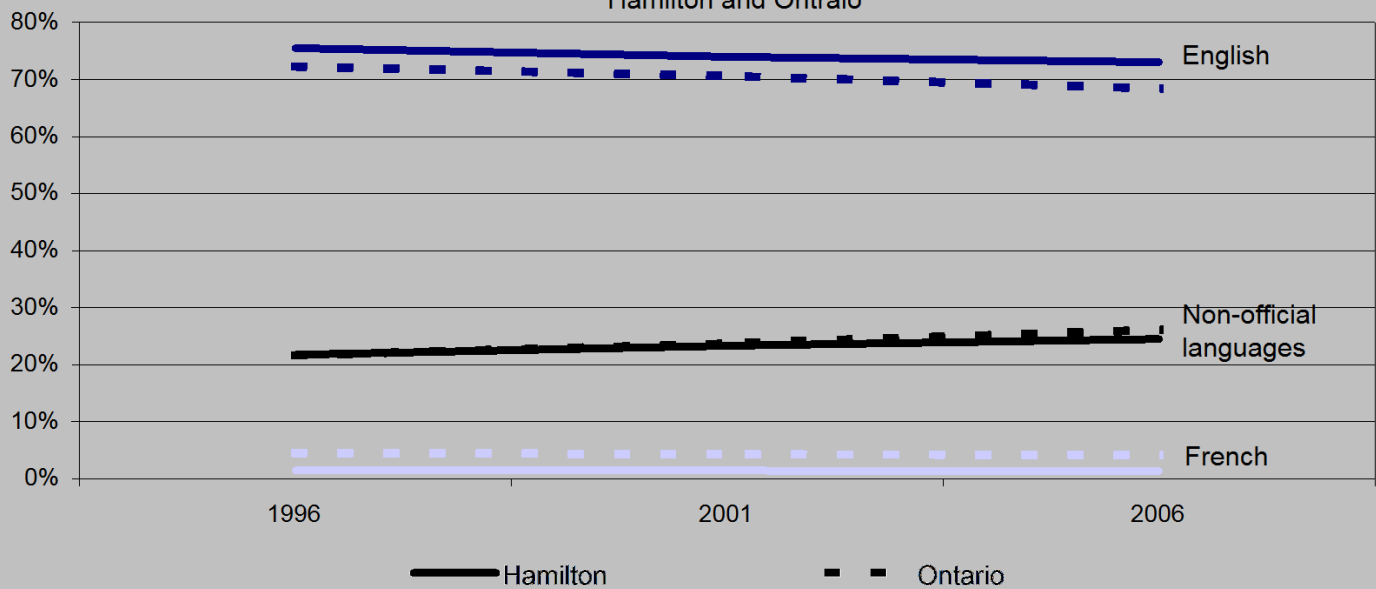


Euro-Languages Still Leaders

European languages comprise the top three mother tongues among non-official language populations in Hamilton. In Ontario as a whole, Chinese languages lead this category with 15.1%, while Hamilton's Chinese language population is significantly smaller at 6.2%.

Mother Tongues

Total populations by share of mother tongue 1996-2006
Hamilton and Ontario



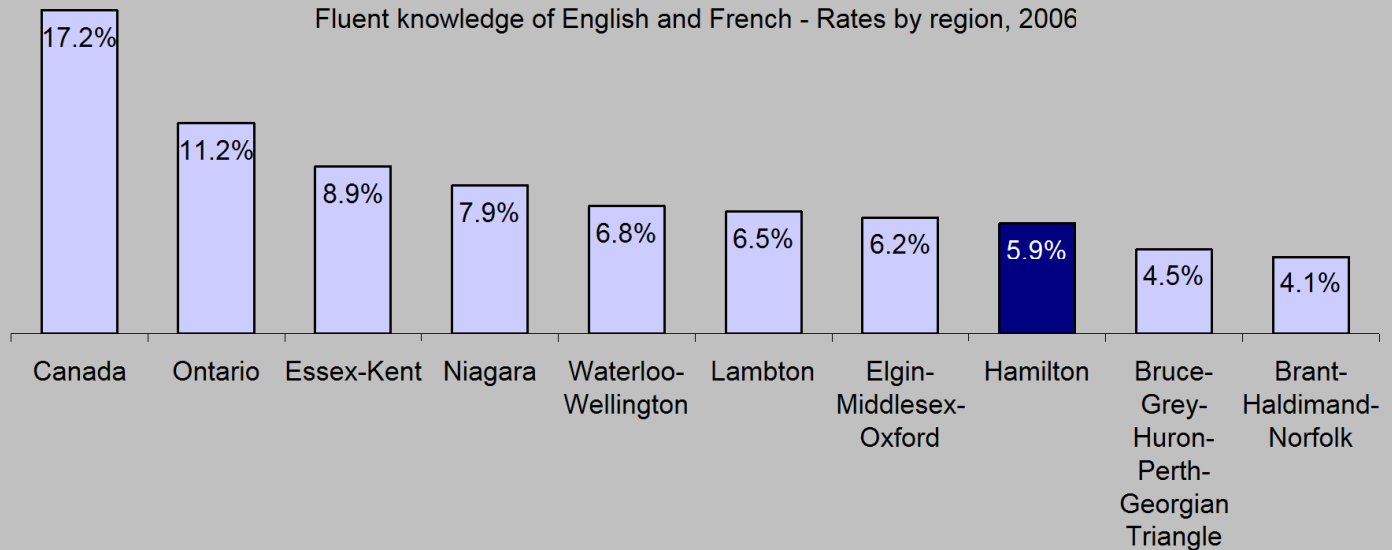
Increasing Diversification

Though there is a greater share of Anglophones in Hamilton than in Ontario as a whole, Hamilton's share of people with a non-official language mother tongue matches the Ontario average and is increasing at a similar rate.

Language

Bilingualism

Fluent knowledge of English and French - Rates by region, 2006



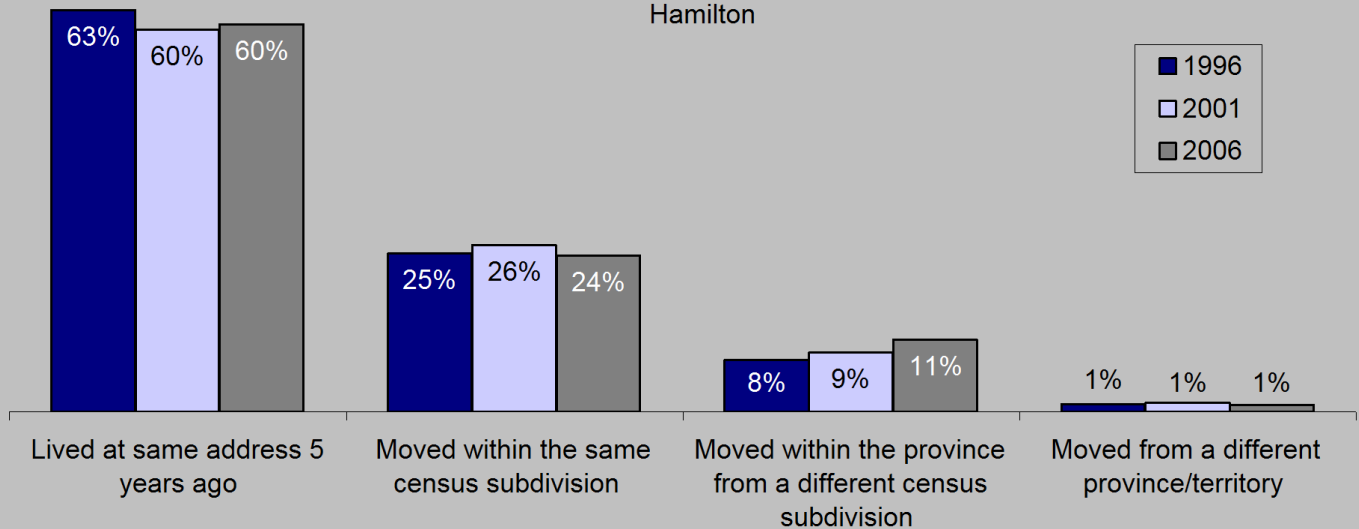
Comparing Bilingualism Rates

This region is much less bilingual than Canada and Ontario as a whole and ranks below average when compared to neighboring regions with 5.9% of the population being fluent in both official languages.

Mobility

Residence Status

Share of population by residence status over five year period
Hamilton



Staying Put

Mobility trends changed little over the past 10 years in Hamilton. Less people in Hamilton moved in the past five years than the Ontario average.

The source of all figures used in this issue is Statistics Canada Census Data

**EMPLOYMENT
ONTARIO**

SEE MORE LABOUR MARKET INFORMATION
ON THE WEB AT WWW.HTAB.CA



THE VIEWS EXPRESSED IN THIS DOCUMENT DO NOT NECESSARILY REFLECT THOSE OF
THE GOVERNMENT OF ONTARIO.